



ARANS

ARVIN ANDOOZAN SAVEH

Plug Valve

Manufacturer and Supplier
of all kinds of Valves for
Gas, Oil and Petrochemical Industries

GENERAL CATALOGUE



ARVIN ANDOOZAN SAVEH

Index

Introduction	2
Manufacturing Program	3
Certificates	4
Range and Index	5
Materials	6
Stem Materials	7
Lubricant	7
Pressure Testing	8
Stress analysis to the body	9
Futures	10
Standards	10
Inspection Policy	10
Class 150 short Pattern, NPS ½" - 2"	12
Class 150 short Pattern, NPS 1" - 6"	13
Class 150 short Pattern, NPS 6" - 12"	14
Class 150 Venturi Pattern, NPS 14"~40"	15
Class 300 short Pattern, NPS ½" - 2"	16
Class 300 short Pattern, NPS 1" - 6"	17
Class 300 Regular Pattern, NPS 4" - 12"	18
Class 300 Regular Pattern, NPS 14" - 40"	19
Class 600 Regular Pattern, NPS ½" - 2"	20
Class 600 Regular Pattern, NPS 1" - 4"	21
Class 600 Regular Pattern, NPS 4" - 10"	22
Class 600 Venturi Pattern, NPS 6" - 24"	23



Company Introduction

We are pleased to present you our company which, since its foundation more than 3 years ago, is dedicated to the production of high-quality valves. Up to 2005 we have been manufacturing all kind of valves mainly for oil, petrochemical, energy and gas services and we are proud to manufacture our valves under our brand ARANSA.

We are equipped with the most modern installations and a highly qualified human team, enabling us to offer the widest possible range of valves combining high standards in technology, quality and productivity, as well as tradition, experience and dependability, with an unrivalled reputation for quality and service.

All of **ARANSA'S** quality guarantee system as well as all its processes and procedures, both technical ones regarding products and the organization of the company, are certified according to the ONE-EN **ISO 9001-2003, TS 29000** standards approved by **Moody International Company**. Though this certification is extremely important for our company, it must be said that the best certification we can offer is that which our customers afford us day after day with their trust when they buy **ARANSA'S** products which are to our complete satisfaction.

The company is structured into two different divisions, petrochemical & energy division gas and oil division, we are proud to present them as follows in this brochure.

FLEXIBILITY-SERVICE-EXPERIENCE-KNOWLEDGE & QUALITY MANUFACTURING PROGRAM

ARANSA valves philosophy is the customer requirement satisfaction fulfilling the most strict requirements of the gas, petrochemical and oil industry. As the market is demanding shortest delivery, technical assistance and higher quality requirements ARANSA is reaching the state of art in giving the best service. ARANSA is a company on the 21 st century involved in improving the environmental issues manufacturing according the latest technology clean and safe.

ARANSA is one of the leader companies in IRAN special valves manufacturing and other products designed for fluids handling applied to petrochemical, gas, oil plants, and general industry. Our principal objective is to be our client's favorite supplier, manufacturing valves that offer the highest value and service levels that exceed our clients' expectative.

Client's service

The ARANSA philosophy is the satisfaction of the client's requirements. Our market position is build over the fundamentals of the product availability from our distributors net and to provide technical support to the valves users. A correct product selection and the advice for the service can be one by simple phone call. We are specialized in tailor made valves according with the customer's specifications. Our sales engineers are qualified for treat with the valves application necessities, receiving clients' requirements and quoting an optimal offer of valves, which satisfies all international standards.

Quality assurance

A complete implemented quality system and strictness quality control and inspection in all the production steps assure that the ARANSA'S products are totally adequate for their proper application and they will give a satisfactory service. All the valves are tested individually according to the international standards Special **API6D**. Our product will be delivered with 24 mounts guarantee and also with after sales service for 10 years.





ARANSI registered as manufacture in many company same as NIGC, NIOC, NIOPDC, NIPC and also approved under many standards such as **ISO 9001, 2000, TS 29000 standards**

Additionally, it has been approved by some users organizations, like main IRNIAN contractor's and customer private organizations in Iran and middle east biggest petrochemical and gas companies for the following range of products, plug and ball valves in a wide variety of pressure and materials such as carbon steel, low alloys, stainless steel and special alloys (monel, duplex, alloy 20, inconel, etc.) our product have been meet many standard such as API6D / API6FA / DIN 3230 / ASME B16.34 also IGS(Iranian gas standard) TPS(Iranian petroleum standard.)

Range and Index

- Regular Pattern
- Short Pattern
- ◆ Venturi Pattern

Full Port pattern as per API 6D is available.

Valves not shown in the table will be considered against specific requirements

NPS	Class	150			300			600		800		900		1500		2500		2000 3000	
		S	R	V	S	R	V	R	V	R	R	V	R	V	V				
1/2	15	●			●			■		■	■		■			◆			
3/4	20	●			●			■		■	■		■			◆			
1	25	●			●			■		■	■		■			◆			
1 1/2	40	●			●			■		■	■		■			◆			
2	50	●			●			■		■	■		■			◆		■	
3	80	●			●			■		■	■		■			◆		■	
4	100	●			●	■		■		■	■		■			◆		■	
6	150	●			●	■		■	◆		■			◆		◆			
8	200	●			■			■	◆			◆		◆		◆			
10	250	●			■				◆			◆		◆		◆			
12	300	●			■				◆			◆		◆		◆			
14	350		■				◆		◆			◆		◆		◆			
16	400		■				◆		◆			◆		◆		◆			
18	450		■				◆		◆			◆		◆		◆			
20	500		■				◆		◆			◆		◆		◆			
24	600		■				◆		◆										
26	650		■				◆												
28	700		■				◆												
30	750		■				◆												
32	800		■				◆												
36	900		■				◆												
40	1000		■				◆												

ARANSA Lubricated Type Plug Valves are available in Regular, Short, Venturi Pattern or Full port. These terms are defined in BS 5353, API 6D and API 599. The different patterns vary as regards end to end dimension and port area for a given size of valve.

Regular Pattern valves have the largest port area. Short Pattern valves have a reduced port area as a consequence of their compact face to face dimensions which are identical to those for wedge gate valves. Venturi Pattern valves have a reduced port area and a flow path approximating a venturi shape to aid pressure recovery face to face and end to end dimensions conform to ANSI B16.10 and BS 2080.



Materials

Body / Cover / Plug Materials

ASTM Code	Material	Service Conditions
A216 WCB	Carbon Steel	For service up to 538° C° where corrosion and oxidation are not a factor.(1) (4) (5)
A217 WC6	1 1/4 CR, 1/2 Mo	For service up to 538° C°. (3) (4) (5)
A217 WC9	2 1/4 CR, 1 Mo	For service up to 1100° F where good creep strength is required. (3) (4) (5)
A217 C5	5% CR, 1/2 Mo	For service up to 592° C°. Best corrosion and oxidation resistance plus high creep strength are required.
A217 C12	9% CR, 1 Mo	For service up to 592° C°. Best corrosion and oxidation resistance than other grades.
A352 LCC	Low Carbon Steel	For service from -46° C° to 340° C°. This material must be quenched and tempered to obtain tensile and impact properties needed at subzero temperatures.
A351 CF8(3)	18Cr-8Ni	Good creep strength, corrosion and oxidation resistance when exposed to temperatures above 427° C°.
A351 CF8M	18Cr-10Ni-2Mo	Good creep strength, corrosion and oxidation resistance when exposed to temperatures above 427° C° and it is resistant to formulation of sigma phase
A351 CF3M	18Cr-10Ni-2Mo	Good creep strength, corrosion and oxidation resistance when exposed to temperatures above 427° C° and it is resistant to formulation of sigma phase
A351 CA15	13Cr	
A487 Gr. 4	0.5Cr-0.5Ni-0.25 Mo	For service requiring good corrosion resistance and high tensile and impact properties as well as good pitting resistance. Excellent weldability and castability. Good for sour gas service

1) Upon prolonged exposure to temperatures above 427° C , the carbide phase of carbon steel may be converted to graphite. Permissible, not recommended for prolonged usage above 427° C .

2) Valve regularly rated to 538° C

3) Considerations should be given to the possibility of excessive oxidation (scaling) when used above 565° C .

4) Product used within the jurisdiction of Section 1 Power Boilers of the ASME Boiler and Pressure Vessel code is subject to the same temperature limitations as specified in that document.

5) Product used within the jurisdiction of Power Piping, ASME Code for Pressure Piping B31.1, is subject to the same maximum temperature limitations placed upon the material

6) Other materials on your request.

Bolting Materials

Normal		NACE requirements	low temperature	Corrosion-resistance	Others
Stud	A193 Gr.B7	A193 Gr.B7M	A320 Gr.L7	A193 Gr.B8(M)	Monel
Nut	A194 Gr.2H	A194 Gr.2HM	A194 Gr.L4	A194 Gr.8(M)	Monel

Other materials on your request.

Plug Valve



Stem Materials

ASTM Code	Material	Service Conditions
A276 420 / 410	13Cr	
A105 ENP		For service up to 425 where corrosion and oxidation are not a factor.
A747 17-4 PH		Very high tensile material. Very good when differential hardness is required due to its resistance to galling. Higher corrosion resistance than high straight chrome alloy steels Other materials on your request.

Lubricant

Type	Ingredients	Service Conditions	Equal Specification
7903 oil-proof sealing grease	Inorganic chemical stiffened oil with anti-oxygenizing and corrosion proof agents, light yellow gluey material	Fuel, lubricant, water and gas @-10° C~ 150° C	Aviation S7108T; NOSOL UTA
7602 high temp. grease stick	Inorganic chemical stiffened oil with solid reinforcements, white or light yellow stick	Vapor, Acid, NH4 etc. Used at 10.29MPa or 530° C	G22/G42; CROSBY C6; Climax750; Masonlilan5
7603 stem grease stick	Poly chemical stiffened oil with solid reinforcements, black elastic stick	Oil, Water and Gas @400° C or above	



Pressures Testing

Test Pressures

VALVE RATING	Maximum C.W.P.	BODY TEST(minimum)	SEAT TEST(minimum)
	bar	bar	bar
CLASS 150 PN 20	19.5	29.5	21.5
CLASS 300 PN 50	51	76.5	56
CLASS 600 PN 100	102	153.2	112
CLASS 800	138	207	152
CLASS 900 PN 150	153	230	168
CLASS 1500 PN 250	256	383	281
CLASS 2500 PN 420	425	638	468
API 2000	138	276	138
API 3000	207	414	207

API pressures are taken from API 6A, all other pressures are taken from ANSI B16.34. The test pressures from ANSI B16.34 are those relevant to Carbon Steel ASTM A216 Gr. WCB. There may not be exact equivalence between pressure in bar and in PSIG due to rounding (1 bar=105 Pa) Each relevant standard defines the minimum length of time for which each test pressure is to be maintained and also the testing operations sequence.

NPS IN	DN mm	Duration of hydrostatic tests in minutes (minimum) ¹								
		Shell Test			Backseat Test			High Closure Test		
		API ⁴	API	ISO ²	API ⁴	API	ISO ^{2 3}	API ⁴	API	ISO ²
≤2	≤50	1	-	0.5	0.5	2	0.5	1	-	0.5
1/2~4	15~100	-	2	-	-	2	-	-	2	-
2 1/2~6	65~150	1	-	-	1	-	0.5	1	-	-
2 1/2~8	65~200	-	-	1	-	-	-	-	-	0.5
6~10	150~250	-	5	-	-	5	0.5	-	5	-
≥10	≥250	2	-	3	-	5	0.5	-	5	-
8~12	200~300	-	-	-	2	-	-	2	-	-
10~18	250~450	-	-	-	-	-	-	-	-	1
12~18	300~450	-	15	-	-	-	-	-	-	-
≥14	≥350	5	-	-	2	-	-	2	-	-
≥20	≥500	-	30	-	-	-	-	-	-	2

Remark:

1. The test duration is calculated after the testing pressure in the valve has been increased to the value stipulated on the standard. These durations will be adhered to unless a different specification is required against a particular order. Hydrostatic tests of long duration require that the valve be given special attention to facilitate pipeline testing. The same duration for BS6755, GB/T13927 & ISO5208.

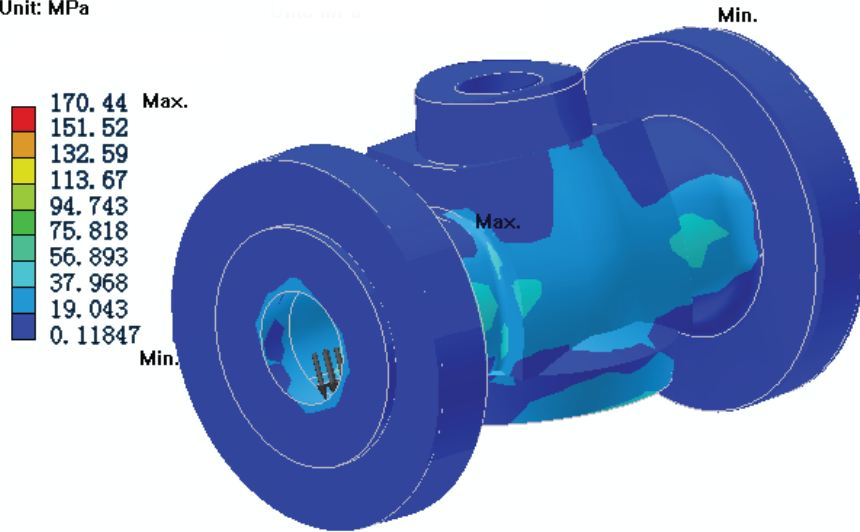
2. ISO5208 has no this requirement which is cited from BS6755.

3. API 6D also requires a 5.5 bar(80 PSIG)air test on the seat for the same duration.

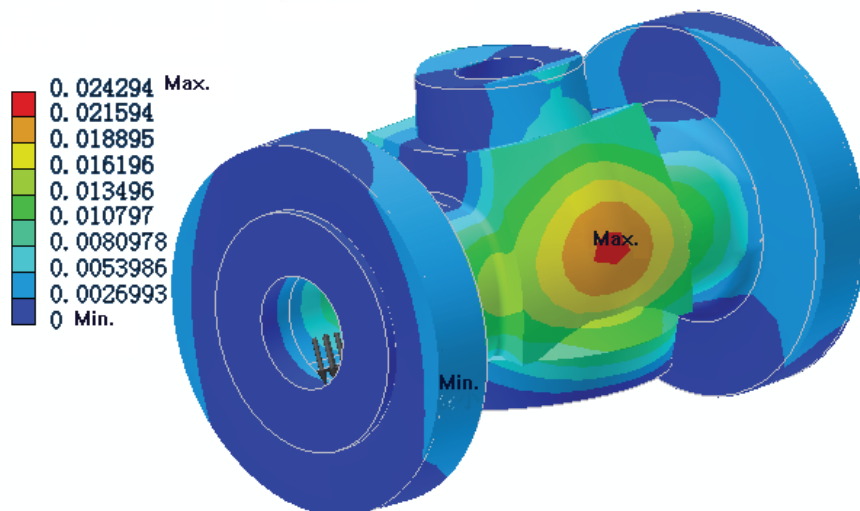
Stress analysis to the body

To prevent the body from being deformed at high pressure is a hard task for the designer when he/she designs a heavy duty plug valves. ARANSA company is using a kind of advanced soft program to analyze the body's stress at high pressure to make out the deformation value. See below pictures, so as to seek a valid body-reinforced way.

Type: Equal-effected Stress
Unit: MPa



Type: Deformation
Unit: mm



Features

- 3 life circles for one time grease adding;
- Advanced body design & emergency sealing system;
- Excellent casting finish & quality, no welding repair to the body;
- Special treatment to the plug in order to harden and lubricate the plug surface.
- Multi-process lapping to carry out the zero leakage without any lubricant for test.

Standards

ARANS Lubricated Type Plug Valves meet the requirements of BS5353, API 599, API 6D and ANSI B16.34. Valves made in materials to meet API 6A are also available.

BS 2080	Face to face, centre to face, end to end, and centre to end dimensions of flanged and butt welding end steel valves for the petroleum, petrochemical and allied industries.
BS EN 12266. 1	Testing of valves. Part 1 Specification for production pressure testing requirements
BS 6755 Pt 2	Testing of valves. Part 2 Specification for fire type—testing requirements.
BS 5353	Specification for steel plug valves
ANS B16. 10	Face to face and end to end dimensions of ferrous valves.
ANSI B16.34	Valves—flanged and butt welding end
API 6A	Specification for wellhead equipment.
API 6D	Specification for pipeline valves.
API 599	Steel plug valves flanged or butt welding ends
API 6FA	Fire test for valves.
NACE MR0175	Sulphide stress cracking resistant metallic material for oilfield equipment.
ISO 9001	Quality Assurance approval standard.

Inspection Policy for ARANS valves

Every ARANS valve is subjected to a 100% pressure test according to API 6D requirements. Manufacturer's material test reports and Inspection and Test Certifications are available upon request.

Some of the additional inspections and tests performed are:

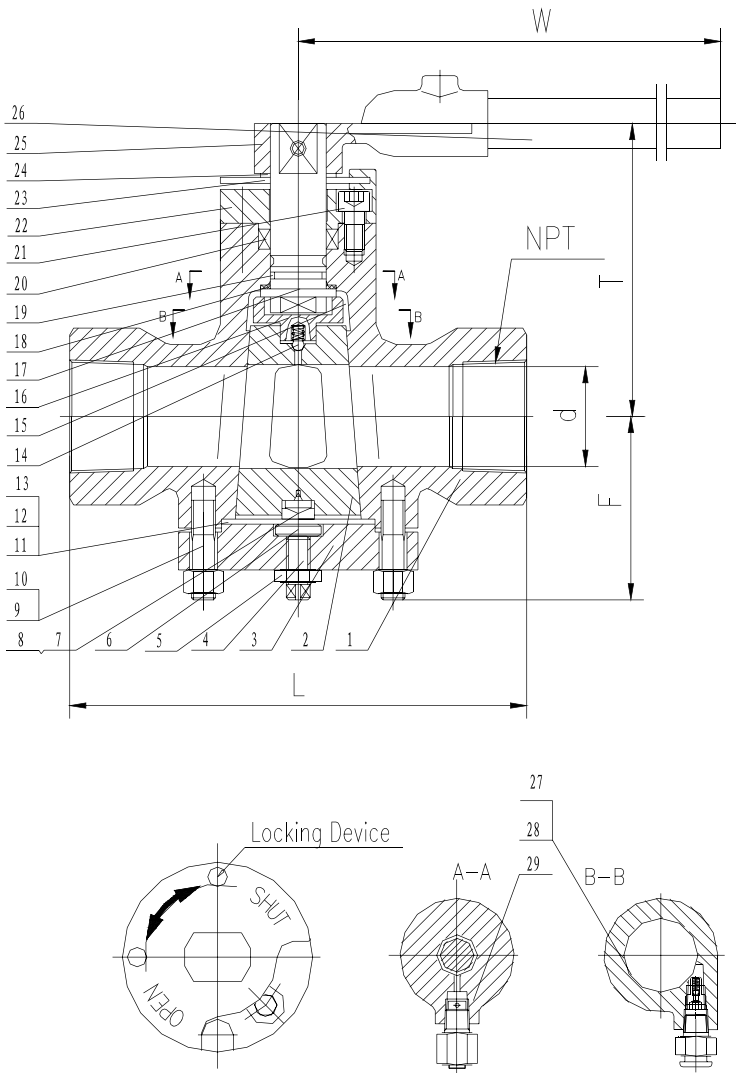
- Random Radiograph Inspection of Body and Bonnet Castings to ASME B16.34 Appendix B
- Random Chemical Composition and Mechanical Properties Verification of Fasteners to ASTM A-193/A-194
- Liquid Penetrate Inspection of Seat Rings
- Visual Inspection of Casting to MSS-SP-55
- Receiving, In-Process, and Final Dimensional Inspections to Relevant Valve Standards
- Other inspections or tests can be performed or evaluation criteria applied when specified by the customer.

ARANSÁ Plug valves

Pressure Balance



Class 150 Short Pattern, NPS 1/2"~2"



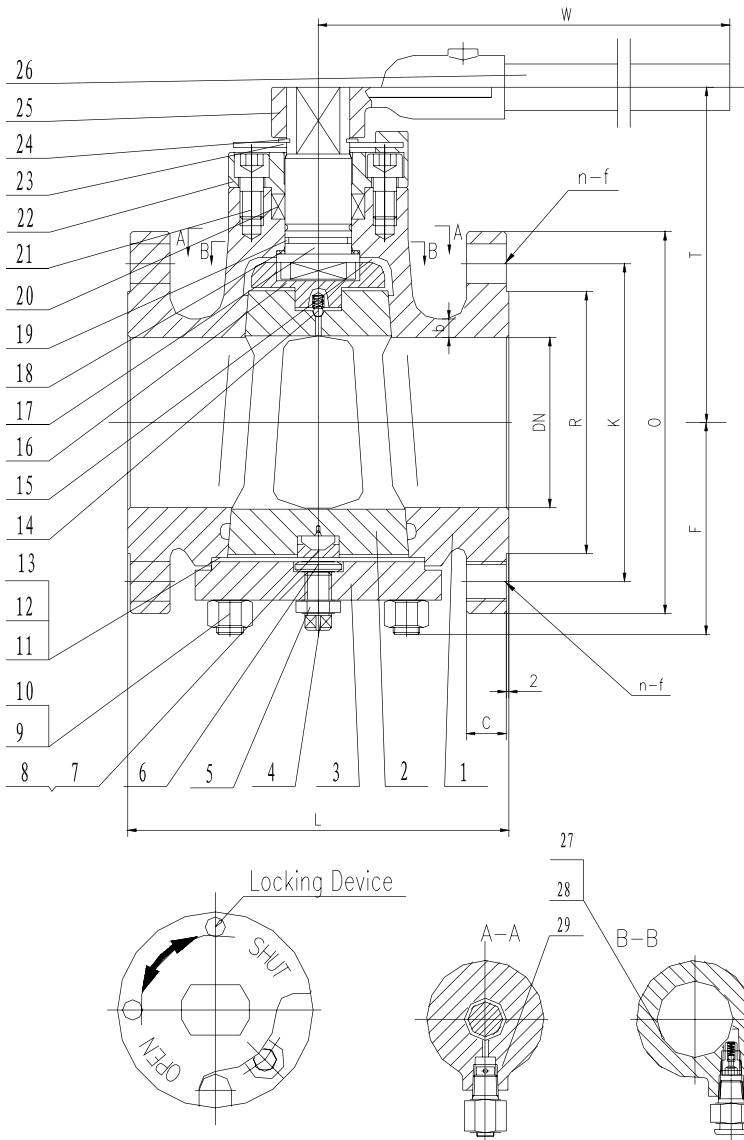
Standard Material Components

Item	Port Name	Material
1	Body	A216 WCB
2	Plug	A216 WCB + ENP
3	Nether Cover	A105
4	Adjustable Bolt	A193 B7
5	Hexagonal Nut	CS
6	Adjustable Block	AISI 1035
7	Jacking Block	AISI 1035
8	Dog	A276 410+SH
9	Bolt	A193 B7
10	Nut	A194 2H
11	Gasket	Flexible Graphite+304
12	Steel Washer	304SS
13	Steel Pillow	A36
14	Cheak Valve	304SS
15	Lubricant	
16	Hub	A216 WCB
17	Stem	13Cr
18	Thrusting	PTFE
19	O-Ring	Viton
20	Braid Packing	Flexible Graphite
21	Stud	CS
22	Upper Cover	A105
23	Positioner	A36
24	Elastic Ring	AISI 1566
25	Hub	A216 WCB
26	Level	AISI 1035
27	Emergency Device	CS / SS
28	Single - Direction Valves	CS / SS
29	Greasing Valve	CS / SS

CLASS 150 SHORT TYPE							
SIZE	d	L	NPT	T	F	W	WEIGHT (KG)
1/2	11	89	1/2-14NPT	89	52	160	
3/4	19	133	3/4-14NPT	103	71	250	
1	19	133	1-11.5NPT	103	71	250	
1 1/2	38	229	1 1/2-11.5NPT	142	90	350	
2	50	229	2-11.5NPT	148	95	350	

Plug Valve

Class 150 Short Pattern, NPS 1"~6"



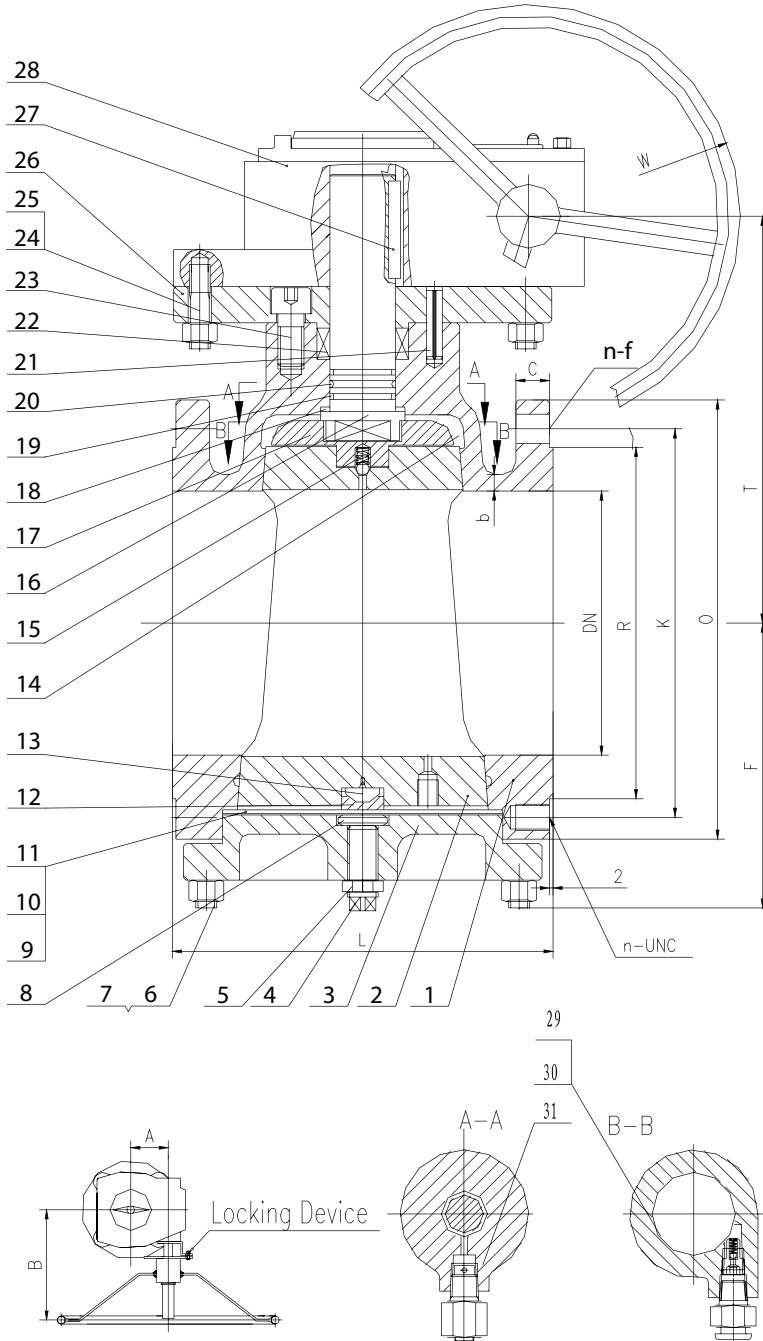
Standard Material Components

Item	Port Name	Material
1	Body	A216 WCB
2	Plug	A105 WCB + ENP
3	Nether Cover	A105
4	Adjustable Bolt	A193 B7
5	Hexagonal Nut	CS
6	Adjustable Block	AISI 1035
7	Jacking Block	AISI 1035
8	Dog	A276 410+SH
9	Bolt	A193 B7
10	Nut	A194 2H
11	Gasket	Flexible Graphite+304
12	Steel Washer	304SS
13	Steel Pillow	A36
14	Cheak Valve	304SS
15	Lubricant	
16	Hub	A216 WCB
17	Stem	13Cr
18	Thrusting	PTFE
19	O-Ring	Viton
20	Braid Packing	Flexible Graphite
21	Stud	CS
22	Upper Cover	A105
23	Positioner	A36
24	Elastic Ring	AISI 1566
25	Hub	A216 WCB
26	Level	AISI 1035
27	Emergency Device	CS / SS
28	Single - Direction Valves	CS / SS
29	Injection Fittingv	CS / SS

CLASS 150 SHORT TYPE												
SIZE	DN	L	O	K	R	C	n-f	b	T	F	W	WEIGHT (KG)
1	25	140	110	79.4	51	9.6	4-16	6.4	103	71	250	
1 1/2	38	165	125	98.4	73	12.7	4-16	6.4	142	90	350	
2	50	178	150	120.7	92	14.3	4-19	8.7	148	95	350	
3	76	203	190	154.2	127	17.5	4-19	10.3	168	108	500	
4	102	229	230	190.5	157	22.3	6-19	11.1	201	127	600	
6	152	267	280	241.3	216	23.9	6-22.5	11.9	251	169	800	



Class 150 Short Pattern, NPS 6"~12"



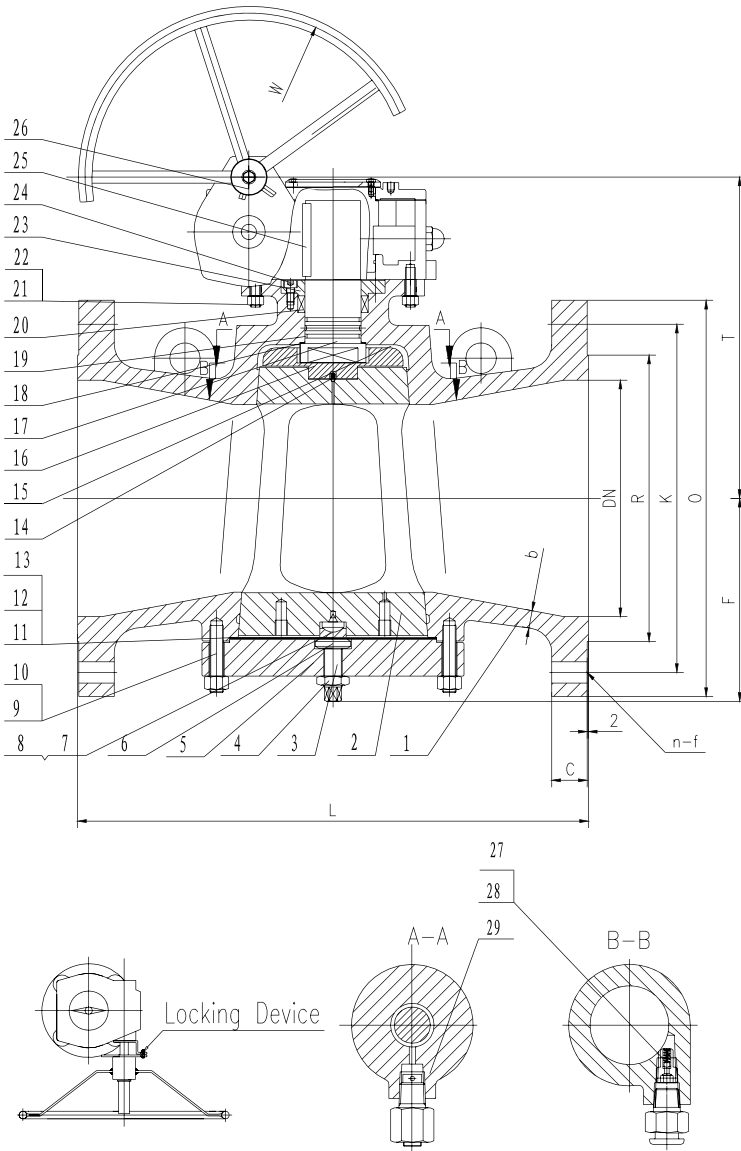
Standard Material Components

Item	Port Name	Material
1	Body	A216 WCB
2	Plug	A216 WCB + ENP
3	Nether Cover	A105
4	Adjustable Bolt	A193 B7
5	Hexagonal Nut	CS
6	Adjustable Block	AISI 1035
7	Jacking Block	AISI 1035
8	Dog	A276 410+SH
9	Bolt	A193 B7
10	Nut	A194 2H
11	Gasket	Flexible Graphite+304
12	Steel Washer	304SS
13	Steel Pillow	A36
14	Cheak Valve	304SS
15	Hub	A216 WCB
16	Stem	A276 420
17	Connector	CS
18	Thrusting Bearing	PTFE
19	O-Ring	Viton
20	Grease stick	
21	Positioning	AS
22	Braid Packing	Flexible Graphite
23	Stud	A370 B
24	Bolt	A370 B
25	Nut	CS
26	Mounted Flange	CS
27	Key	AISI 1045
28	Actuator	CI / CS
29	Emergency Device	CS / SS
30	Single - Direction Valves	CS / SS
31	Injection Fitting	CS / SS

CLASS 150 SHORT TYPE													
SIZE	DN	L	O	K	R	C	n-f	n-UNC	b	T	F	W	WEIGHT (KG)
6	152	267	280	241.3	216	23.9	6 - 22.5	2-3/4-10UNC	11.9	261	174	460	
8	203	292	345	298.5	270	27	6 - 22.5	2-3/4-10UNC	12.7	292	215	600	
10	254	330	405	362	405	28.6	10 - 25.5	2-7/8-9UNC	14.3	317	245	600	
12	305	356	485	431.8	485	30.2	10 - 25.5	2-7/8-9UNC	15.9	360	285	600	

Plug Valve

Class 150 Venturi Pattern, NPS 14"~40"



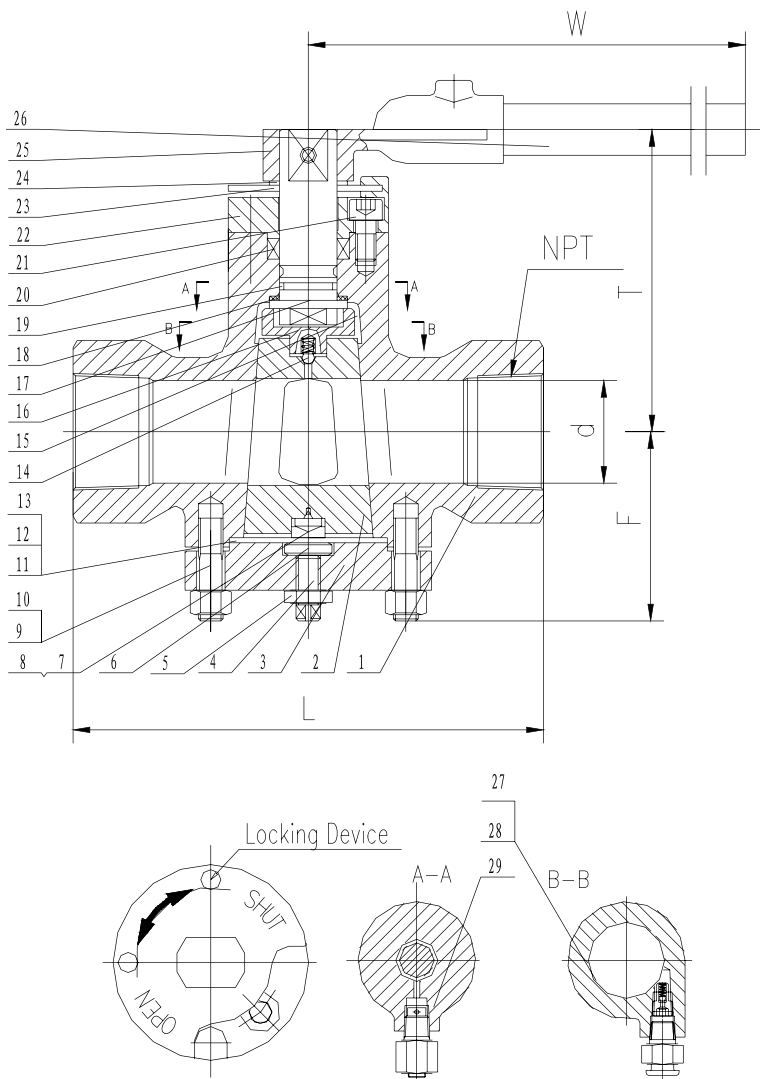
Standard Material Components

Item	Port Name	Material
1	Body	A216 WCB
2	Plug	A216 WCB + ENP
3	Nether Cover	A105
4	Adjustable Bolt	A 193 B7
5	Hexagonal Nut	CS
6	Adjustable Block	AISI 1035
7	Doq Support	AISI 1035
8	Doq	A276 410tSH
9	Bolt	A193 B7
10	Nut	A194 2H
11	Gasket	Flexible Groohitet 304
12	Steel Washer	304SS
13	Steel pillow	A36
14	Check Valve	304SS
15	Lubricant	
16	Connector	A216 WCB
17	Stem	A276 420
18	Ihrustino Beorino	PTFE
19	O-Rina	Viton
20	Braid Packina	Flexible Graphite
21	Bolt	A370 B
22	Nut	CS
23	Gland	A105
24	Stud	A307 B
25	Kev	AISI 1045
26	Actuator	c/cs
27	Emergency Device	cs/ss
28	Single-Direction Valves	cs/ss
29	Injection Fitting	cs/ss

CLASS 150 VENTURI TYPE												
SIZE	DN	L	O	K	R	C	n-f	b	T	F	W	WEIGHT (KG)
14	334	686	535	476.3	413	33.4	12-28.5	16.7	365	265	600	
16	385	762	595	539.8	470	35	16-28.5	17.5	528	317	600	
18	436	864	635	577.9	533	38.1	16-32	18.2	-	-	600	
20	487	914	700	635	584	41.3	20-32	19.1	-	-	600	
24	589	1067	815	749.3	692	46.1	20-35	20.6	-	-	600	
26	633	-	870	806.5	749	68.3	24-35	22.8	-	-	600	
28	684	-	927	863.6	808	71.4	28-35	25.6	-	-	600	
30	735	1295	984	914.4	857	74.7	28-35	29.1	-	-	600	
36	874	1600	1168	1085.9	1022	90.4	32-41	36.5	-	-	600	
40	976	-	1289	1200.2	1124	90.4	36-41	54.5	-	-	600	



Class 300 Short Pattern, NPS 1/2"~2"



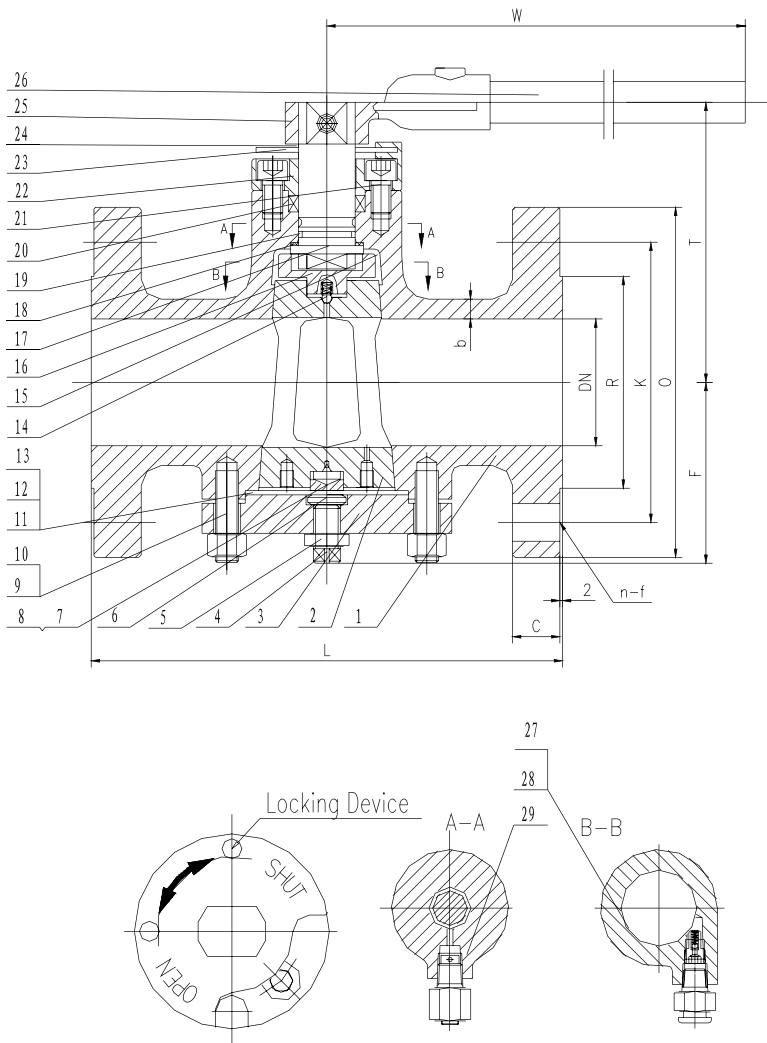
Standard Material Components

Item	Port Name	Material
1	Body	A216 WCB
2	Plug	A216 WCB + ENP
3	Nether Cover	A105
4	Adjustable Bolt	A 193 B7
5	Hexagonal Nut	CS
6	Adjustable Block	AISI 1035
7	Doq Support	AISI 1035
8	Doq	A276 41 OtSH
9	Bolt	A 193 B7
10	Nut	A 194 2H
11	Gasket	Flexible GroDhitet304
12	Steel Washer	304SS
13	Steel pillow	A36
14	Check Valve	304SS
15	Lubricant	
16	Connector	A216 WCB
17	Stem	13Cr
18	Ihrustino Beorino	PTFE
19	O-Rina	Viton
20	Braid Packina	Flexible Graphite
21	Bolt	CS
22	Nut	A105
23	Gland	A36
24	Stud	AISI1566
25	Kev	A216 WCB
26	Actuator	AISI 1035
27	Emergency Device	CS/SS
28	Single-Direction Valves	CS/SS
29	Injection Fitting	CS/SS

CLASS 300 SHORT TYPE							
SIZE	d	L	NPT	T	F	W	WEIGHT (KG)
1/2	11	89	1/2-14NPT	89	52	160	
3/4	19	133	3/4-14NPT	103	71	250	
1	19	133	1-11.5NPT	103	71	250	
1 1/2	38	229	1 1/2-11.5NPT	142	90	350	
2	50	229	2-11.5NPT	148	95	350	

Plug Valve

Class 300 Short Pattern, NPS 1"~6"



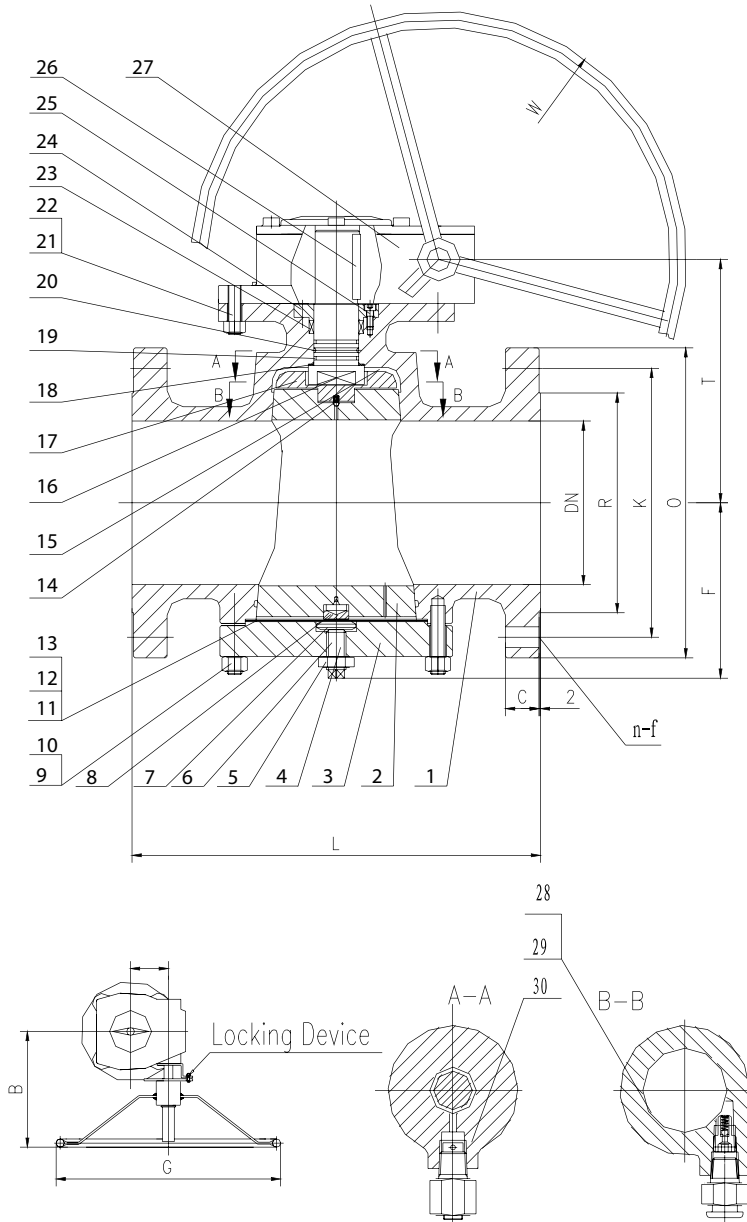
Standard Material Components

Item	Port Name	Material
1	Body	A216 WCB
2	Plug	A216 WCB + ENP
3	Nether Cover	A105
4	Adjustable Bolt	A 193 B7
5	Hexagonal Nut	CS
6	Adjustable Block	AISI1035
7	Jacking Block	AISI1035
8	Doq	A276 41 OtSH
9	Bolt	A 193 B7
10	Nut	A 194 2H
11	Gasket	Flexible Groohitet304
12	Steel Washer	304SS
13	Steel Dillow	A36
14	Cheak Valve	304SS
15	Lubricant	
16	Hub	A216 WCB
17	Stem	13Cr
18	Thrusting Bearing	PTFE
19	O-Ring	Viton
20	Braid Packing	Flexible Graphite
21	Screw	CS
22	Upper Cover	A105
23	Positioner	A36
24	Elastic Rina	AISI1566
25	Hub	A216 WCB
26	Level	AISI 1035
27	Emergency Device	CS/SS
28	Single-Direction Valves	CS/SS
29	In jection Fitting	CS/SS

CLASS 300 SHORT TYPE												
SIZE	DN	L	O	K	R	C	n-f	b	T	F	W	WEIGHT (KG)
1	25	159	110	88.9	51	15.9	4-19	6.4	103	71	250	
1 1/2	38	191	125	114.3	73	19.1	4-22.5	7.9	142	90	350	
2	50	216	150	127	92	20.7	8-19	9.5	148	95	420	
3	76	283	190	168.3	127	27	8-22.5	11.9	168	112	600	
4	102	305	230	200	157	30.2	8-22.5	12.7	201	136	800	
6	152	403	280	269.9	216	35	12-22.5	15.9	247	175	1000	



Class 300 Regular Pattern, NPS 4"~12"



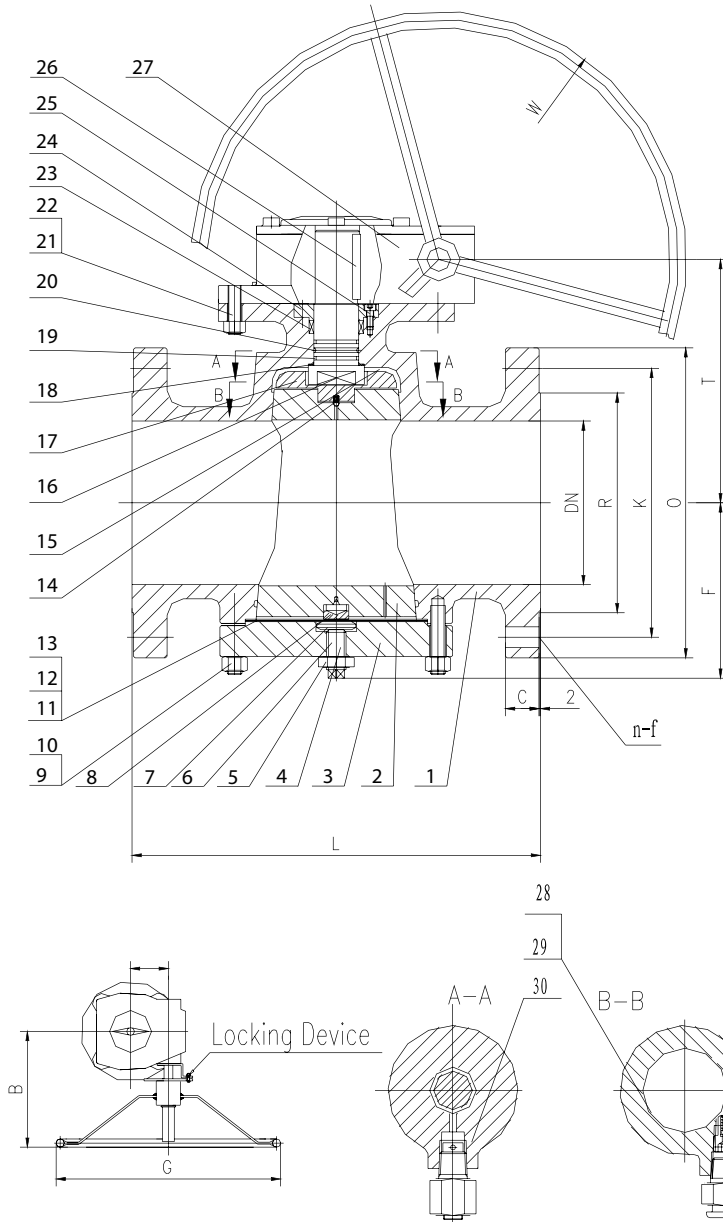
Standard Material Components

Item	Port Name	Material
1	Body	A216 WCB
2	Plug	A216 WCB + ENP
3	Nether Coyer	A105
4	Adiustable Bolt	A 193 B7
5	Hexaaonal Nut	CS
6	Adiustable Block	AISI1035
7	Jackingq Block	AISI1035
8	Doq	A276 41 OtSH
9	Bolt	A 193 B7
10	Nut	A 194 2H
11	Gasket	Flexible Grophitet304
12	Steel Washer	304SS
13	Steel Dillow	A36
14	Cheak voive	304SS
15	Lubricant	
16	Hub	A216 WCB
17	Stem	13Cr
18	Thrustingq Bearinq	PTFE
19	O-Ring	Viton
20	Grease Stick	
21	Bolt	A307 B
22	Nut	CS
23	Braid Packingq	Flexible Crochite
24	Gland	A105
25	Stud	A307 B
26	Key	CS
27	Gear Box.	
28	Imercencv Uevice	CS/SS
29	Sinale-Direction Valves	CS/SS
30	Injection Fitting	CS/SS

CLASS 300 REGULAR TYPE												
SIZE	DN	L	O	K	R	C	n-f	b	T	F	W	WEIGHT (KG)
4	102	305	255	200	157	30.2	8-22.5	12.7	216	136	250	
6	152	403	320	269.9	216	35	12-22.5	15.9	268	175	350	
8	203	502	380	330.2	270	39.7	12-22.5	17.5	291	209	420	
10	254	568	445	387.4	324	46.1	16-28.5	19.1	328	246	600	
12	305	711	520	450.8	381	49.3	16-32	20.6	475	285	800	

Plug Valve

Class 300 Regular Pattern, NPS 14"~40"



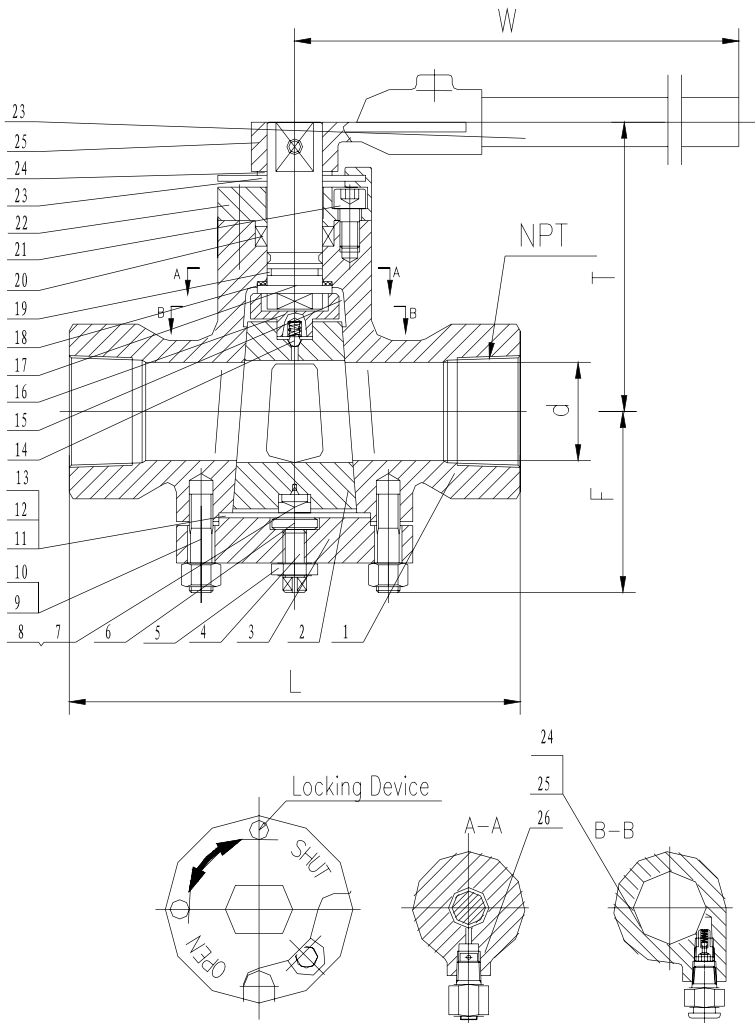
Standard Material Components

Item	Port Name	Material
1	Body	A216 WCB
2	Plug	A216 WCB + ENP
3	Nether Cover	A105
4	Adjustable Bolt	A193 B7
5	Hexagonal Nut	CS
6	Adjustable Block	AISI 1035
7	Doa Support	AISI 1035
8	Doq	A276 410tSH
9	Bolt	A193 87
10	Nut	A194 2H
11	Gasket	Flexible Groohitet304
12	Steel Washer	304SS
13	Steel pillow	A36
14	Check Valve	304SS
15	Lubricant	
16	Connector	A216 WCB
17	Stem	A276 420
18	Ihrustino Rp.orino	PTFE
19	O-Rina	Viton
20	Braid Packina	Flexible Graphite
21	Bolt	A370 8
22	Nut	CS
23	Gland	A105
24	Stud	A307 B
25	Kev	AISI 1045
26	Actuator	c/cs
27	Emergency Device	cs/ss
28	Single-Direction Valves	cs/ss
29	In jection Fitting	cs/ss

CLASS 300 VENTURI TYPE												
SIZE	DN	L	O	K	R	C	n-f	b	T	F	W	WEIGHT (KG)
14	334	762	585	514.4	413	52.4	20-32	22.2	365	265	600	
16	385	838	650	571.5	470	55.6	20-35	23.8	528	317	600	
18	436	914	710	628.6	533	58.8	24-35	25.4	-	-	600	
20	487	991	775	685.8	584	62	24-35	27	-	-	600	
24	589	1143	915	812.8	692	68.3	24-41	30.1	-	-	600	
26	633	1245	972	876.3	749	79.2	28-45	34.5	-	-	600	
28	684	1346	1035	939.8	808	85.8	28-45	40	-	-	600	
30	735	1397	1092	997	857	92	28-48	46	-	-	600	
36	874	1727	1270	1168.4	1022	104.7	32-54	55	-	-	600	
40	976	-	1238	1155.7	1086	114.3	32-54	62	-	-	600	



Class 600 Regular Pattern, NPS 1/2"~2"



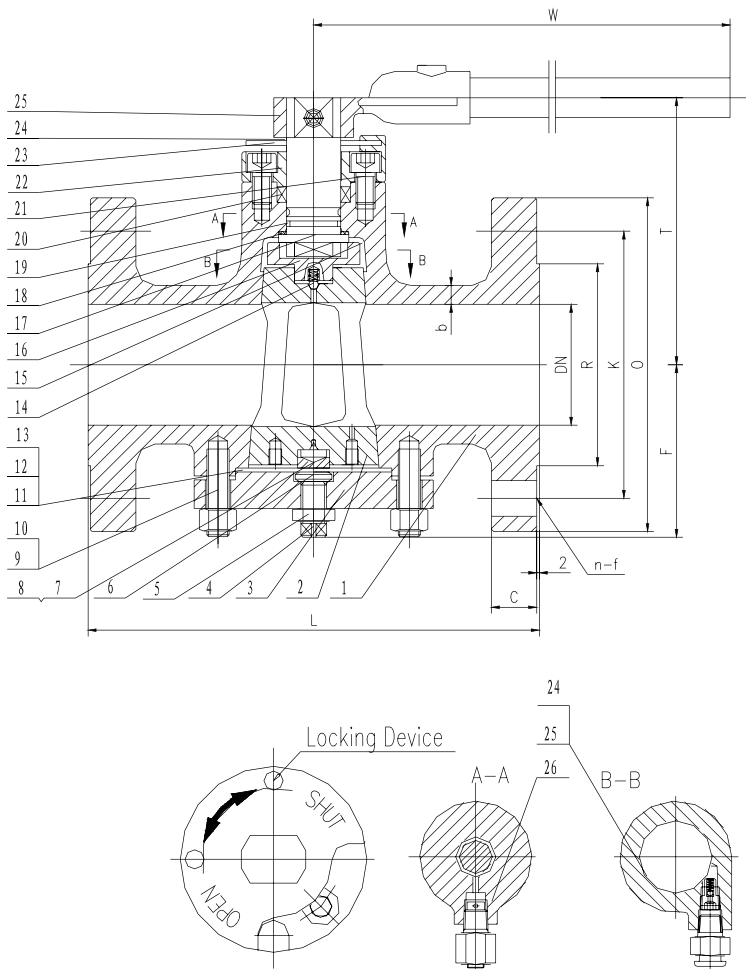
Standard Material Components

Item	Port Name	Material
1	Body	A216 WCB
2	Plug	A216 WCB + ENP
3	Nether Cover	A105
4	Adjustable Bolt	A 193 B7
5	Hexagonal Nut	CS
6	Adjustable Block	AISI1035
7	Jackina Block	AISI1035
8	Center	A276 41 OtSH
9	Bolt	A 193 B7
10	Nut	A 194 2H
11	Gasket	Flexible Croohite- 304
12	Steel Washer	304SS
13	Steel Dillow	A36
14	Cheak Valve	304SS
15	Lubricatina Grease	
16	Hub	A216 WCB
17	Stem	nCr
18	Thrusting Bering	PTFE
19	O-Ring	Won
20	Braid Packina	Flexible Graphite
21	Screw	CS
22	UDDer Cover	A105
23	Positioner	A36
24	Blockina Circle	AISI1566
25	Hub	A216 WCB
26	Level	AISI1035
27	Emeraencv Device	CS/SS
28	Sinole-Direction Valves	CS/SS
29	Greasing Valves	CS/SS

CLASS 600 REGULAR TYPE							
SIZE	d	L	NPT	T	F	W	WEIGHT (KG)
1/2	11	89	1/2-14NPT	89	52	260	
3/4	19	133	3/4-14NPT	103	71	350	
1	19	133	1-11.5NPT	103	71	350	
1 1/2	38	229	1 1/2-11.5NPT	142	90	450	
2	50	229	2-11.5NPT	148	97	550	

Plug Valve

Class 600 Regular Pattern, NPS 1"~4"



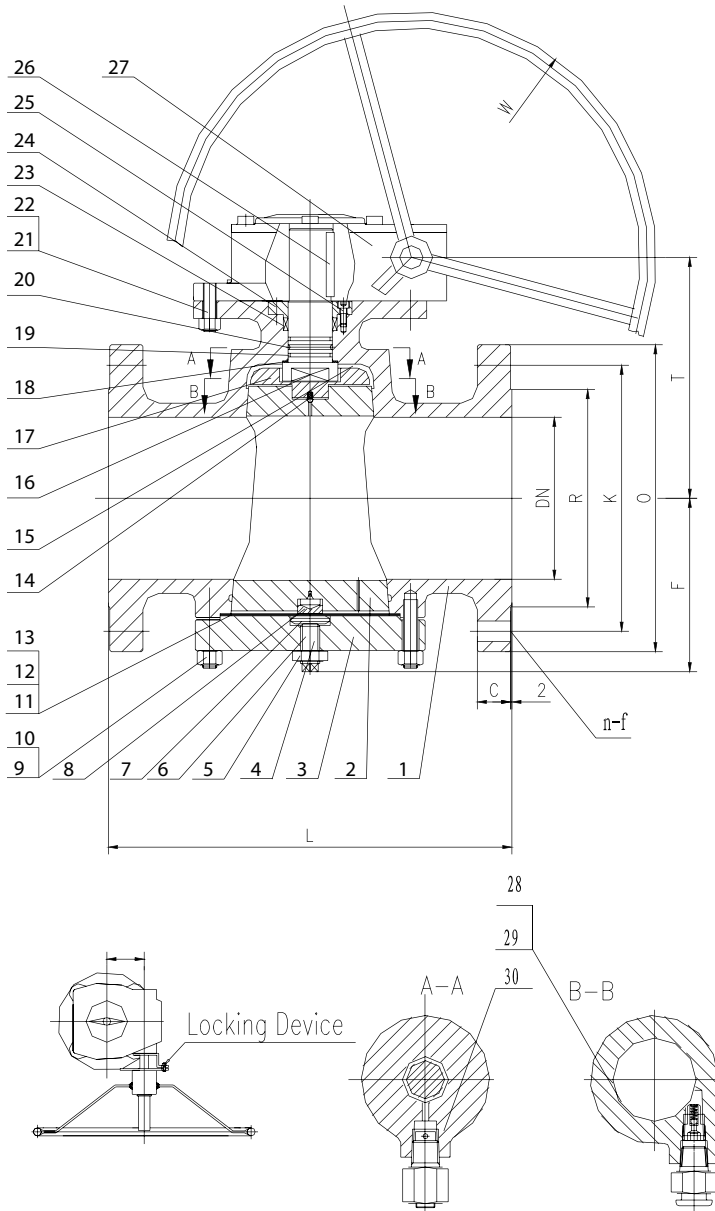
Standard Material Components

Item	Port Name	Material
1	Body	A216 WCB
2	Plug	A216 WCB + ENP
3	Nether Cover	A105
4	Adjustable Bolt	A 193 B7
5	Hexagonal Nut	CS
6	Adjustable Block	AISI1035
7	Jackina Block	AISI1035
8	Center	A276 41 OtSH
9	Bolt	A 193 B7
10	Nut	A 194 2H
11	Gasket	Flexible GroDhitet304
12	Steel Washer	304SS
13	Steel Dillow	A36
14	Cheak Valve	304SS
15	Lubricatina Grease	
16	Hub	A216 WCB
17	Stem	13Cr
18	Thrusting Bering	PTFE
19	O-Ring	Viton
20	Braid Packing	Flexible Croohite
21	Screw	CS
22	Upper Cover	A105
23	Positioner	A36
24	Blockina Circle	AISI1566
25	Hub	A216 WCB
26	Level	AISI1035
27	Emeraencv Device	CS/SS
28	Single-Direction Valves	CS/SS
29	Greasing Valves	CS/SS

CLASS 600 REGULAR TYPE												
SIZE	DN	L	O	K	R	C	n-f	b	T	F	W	WEIGHT (KG)
1	25	216	125	88.9	51	17.5	4-19	7.9	103	71	350	
1 1/2	38	241	155	114.3	73	22.3	4-22.5	9.3	142	90	450	
2	50	292	165	127	92	25.4	8-19	11.1	148	97	550	
3	76	356	210	168.3	127	31.8	8-22.5	12.7	168	112	700	
4	102	432	275	215.9	157	38.1	8-22.5	15.9	210	136	1000	



Class 600 Regular Pattern, NPS 4"~10"



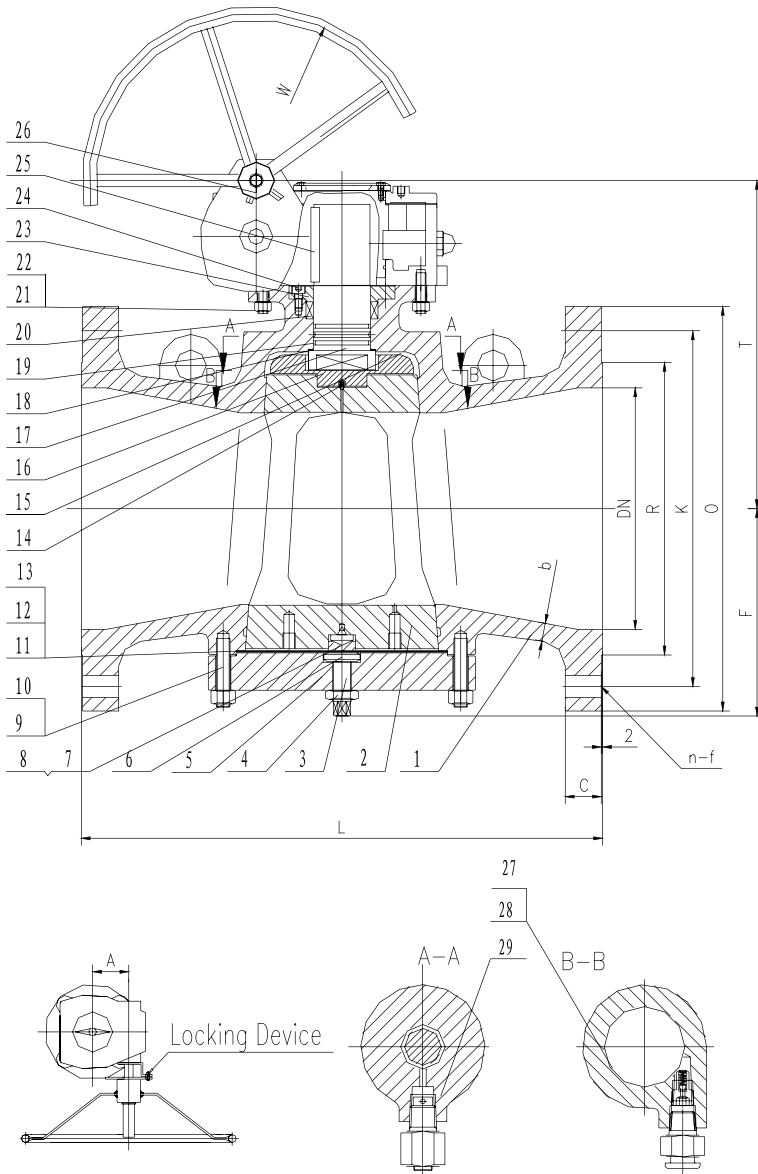
Standard Material Components

Item	Port Name	Material
1	Body	A216 WCB
2	Plug	A216 WCB + ENP
3	Nether Cover	A105
4	Adjustable Bolt	A 193 B7
5	Hexconol Nut	CS
6	Adjustable Block	AISI1035
7	Jacking Block	AISI1035
8	Doq	A276 41 OtSH
9	Bolt	A 193 B7
10	Nut	A 194 2H
11	Gasket	Flexible Groohitet304
12	Steel Washer	304SS
13	Steel Dillow	A36
14	Cheak Valve	304SS
15	Lubricant	
16	Hub	A216 WCB
17	Stem	13Cr
18	Thrusting Bearing	PTFE
19	O-Ring	Viton
20	Grease Stick	
21	Bolt	A307 B
22	Nut	CS
23	Braid Packing	Flexible Crcohite
24	Gland	A105
25	Stud	A307 B
26	Kev	CS
27	Gear Box.	
28	Emerqencv Device	CS/SS
29	Single-Direction Valves	CS/SS
30	Injection Fitting	CS/SS

CLASS 600 REGULAR TYPE												
SIZE	DN	L	O	K	R	C	n-f	b	T	F	W	WEIGHT (KG)
4	102	432	275	215.9	157	38.1	8-22.5	15.9	225	136	250	
6	152	559	355	292.1	216	47.7	12-28.5	19.1	270	185	350	
8	203	660	420	349.2	270	55.6	12-32	25.4	310	232	420	
10	252	787	510	431.8	324	63.5	16-35	28.6	-	-	420	

Plug Valve

Class 600 Venturi Pattern, NPS 6"~24"



Standard Material Components

Item	Port Name	Material
1	Body	A216 WCB
2	Plug	A216 WCB + ENP
3	Nether Cover	A105
4	Adjustable Bolt	A 193 B7
5	Hexagonal Nut	CS
6	Adjustable Block	AISI1035
7	Jackina Block	AISI1035
8	Doq	A27641O+SH
9	Bolt	A193 B7
10	Nut	A1942H
11	Gasket	Flexible Croohite) 304
12	Steel Washer	304SS
13	Steel pillow	A36
14	Cheak Valve	304SS
15	Lubricant	
16	Hub	A216 WCB
17	Stem	A27642O
18	Thrustina Bearina	PTFE
19	O-Rina	Viton
20	Braid Packina	Flexible Graphite
21	Bolt	A370 B
22	Nut	CS
23	Gland	A105
24	Stud	A307 B
25	Kev	AISI1045
26	Actuator	c/cs
27	Emergency Device	cs/ss
28	Single-Direction Valves	cs/ss
29	Injection Fitting	cs/ss

CLASS 600 VENTURI TYPE												
SIZE	DN	L	O	K	R	C	n-f	b	T	F	W	WEIGHT (KG)
6	152	559	355	292.1	216	47.7	12-28.5	19.1	225	136	600	
8	203	660	420	349.2	270	55.6	12-32	25.4	270	185	600	
10	254	787	510	431.8	324	63.5	16-35	28.6	310	232	600	
12	305	838	560	489	381	66.7	20-35	31.8	-	-	600	
14	334	889	605	527	413	69.9	20-38	34.9	-	-	600	
16	385	991	685	603.2	470	76.2	20-41	38.1	-	-	-	
18	436	1092	745	654	533	82.6	24-44.5	41.3	-	-	-	
20	487	1194	815	723.9	584	88.9	24-44.5	44.5	-	-	-	
24	589	1397	940	838.2	692	101.6	24-51	50.8	-	-	-	



We can supply you all kinds of Plug, Ball, Butterfly, Gate, Globe and Check valves from anywhere in the world

Valve	Size	Class	Connection
Plug	1/2" - 24"	150 - 300 - 600	Butt Weld - Flanged
Gate	1/2" - 24"	150 - 300 - 600	Butt Weld - Flanged
Globe	1/2" - 12"	150 - 300 - 600	Butt Weld - Flanged
Check	1" - 24"	150 - 300 - 600	Butt Weld - Flanged
Butterfly	1" - 24"	150 - 300 - 600	Butt Weld - Flanged
Ball	1/2" - 24"	150 - 300 - 600	Butt Weld - Flanged




ARNSA
ARVIN ANDOOZAN SAVEH



w w w . a r v i n s a v e h . c o m

Head Office:

Unit 28, No.4, Nasser St., Afriga Blvd., Tehran, IRAN
Tel.: +98(21) 8888 7007-10 Fax: +98(21) 8820 7019

Factory:

20th St., Kaveh Industrial Zone, Saveh, IRAN
Tel.: +98(255) 234 5432 - 3 Fax: +98(255) 234 5434

E-mail: info@arvinsaveh.com